

HOLES PLOTTED

TOTAL 3

SP07-01 SP07-02 SP07-03

NUMBER BANDS	L/R	COL	RANGE
Au(ppb)	R		
			1500
			800
			400
			200
			100
			50
			20

POSTED TEXT	L/R	TEXT	ITEMS
Au(ppb)	R	-----	All
UNIT	L	-----	All

SECTION SPECS:
REF. PT. E, N 346773 m 6876505 m
EXTENTS 400.2 m 268.1 m
SECTION TOP, BOT 826.8 m 558.7 m
TOLERANCE +/- 10 m

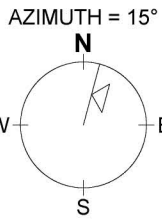
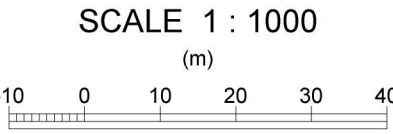
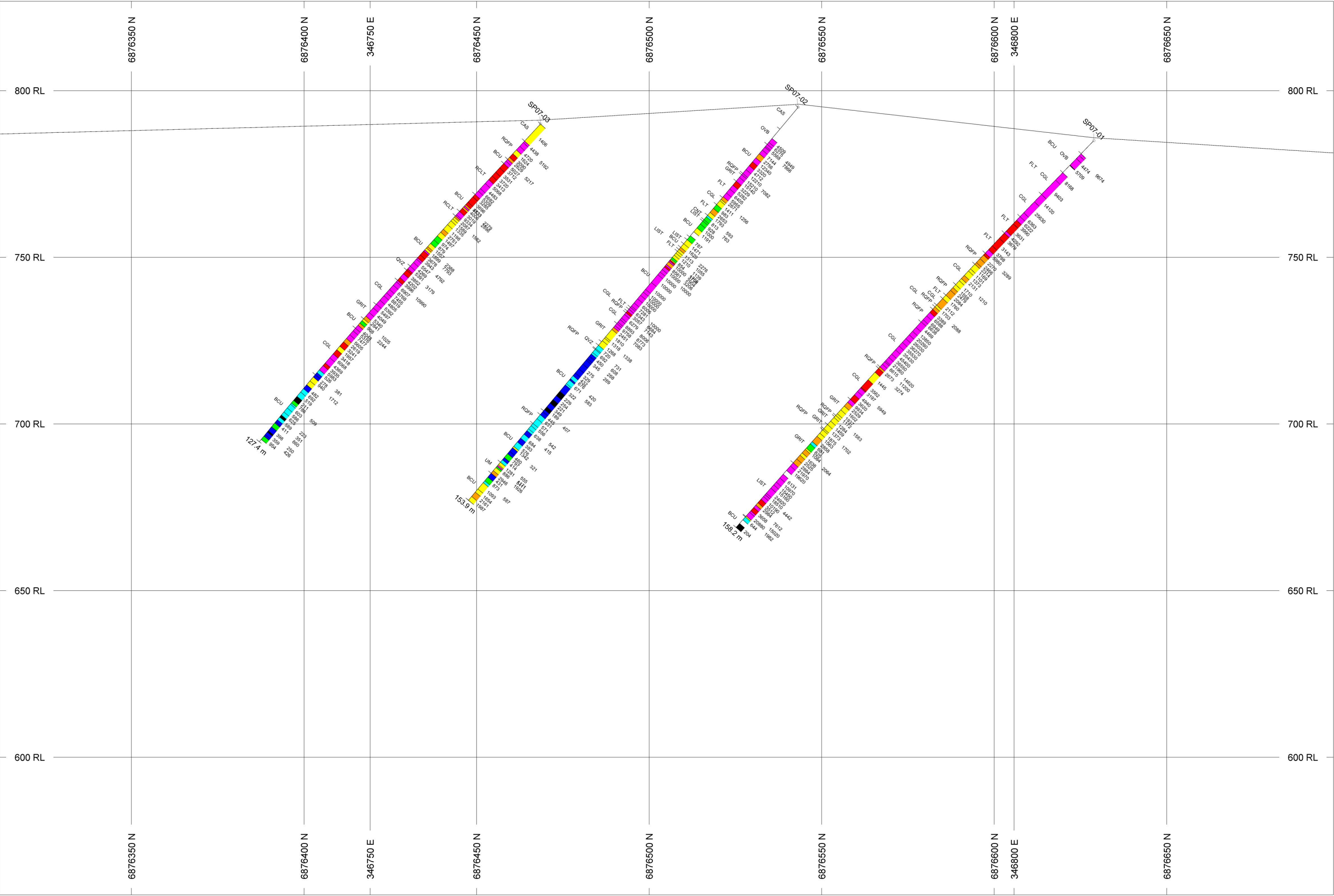
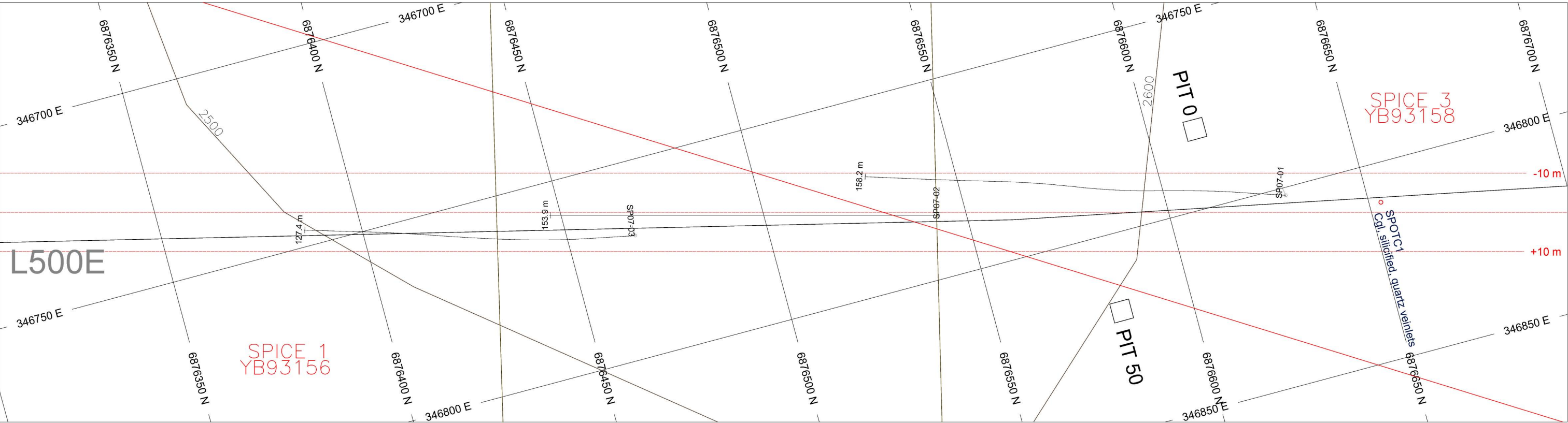


Figure 10

Klondike Star Mineral Corp.
Spice Project
Drillhole Cross-section with Au
L500E - SP07-01, 02, 03

January 2, 2008



HOLES PLOTTED

TOTAL 3

SP07-01 SP07-02 SP07-03

NUMBER BANDS	L/R	COL	RANGE
Hg (ppb)	R		
			4000
			3000
			2000
			1000
			750
			500
			250

ASSAYS	L/R	TEXT
Hg (ppb)	R	-----

POSTED TEXT	L/R	TEXT	ITEMS
UNIT	L	-----	All

SECTION SPECS:
REF. PT. E, N 346773 m 6876505 m
EXTENTS 400.2 m 268.1 m
SECTION TOP, BOT 826.8 m 558.7 m
TOLERANCE +/- 10 m

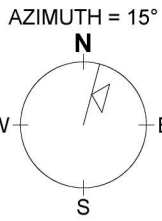
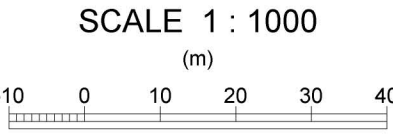


Figure 11

Klondike Star Mineral Corp.
Spice Project
Drillhole Cross-section with HG
L500E - SP07-01, 02, 03

January 2, 2008